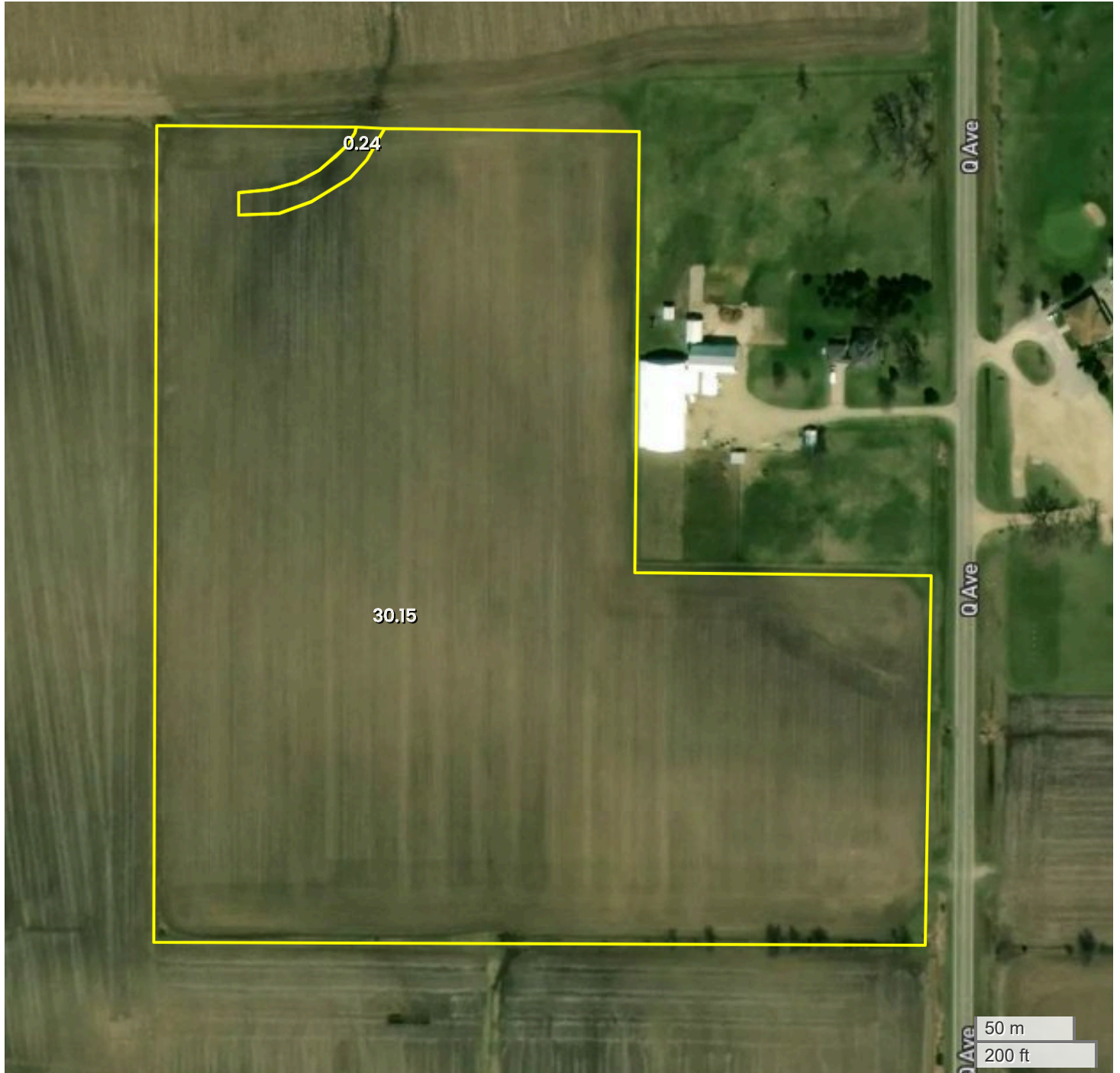




TRACT 2
AERIAL MAP



Center: 42.647316, -91.926091

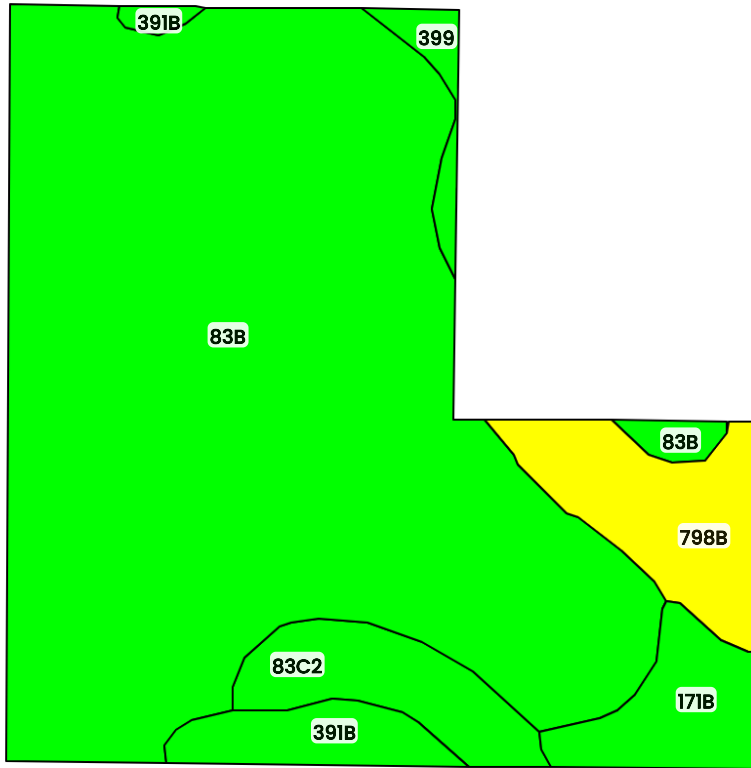
32-91N-9W
Jefferson Township
Fayette County, IA



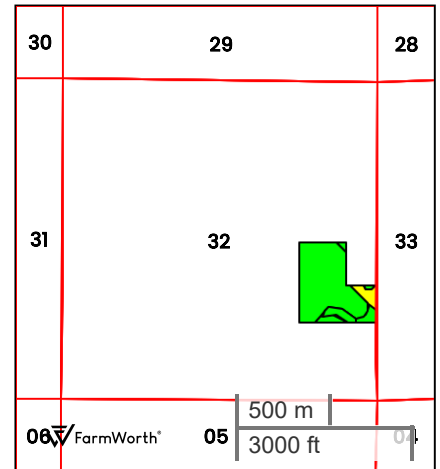
FarmWorth, LLC makes no representations or warranties, express or implied, as to the accuracy of any information, data, numerical values, boundaries, or any other information generated through the use of FarmWorth.com. User is solely responsible for independently investigating and determining all information provided through FarmWorth.com prior to use and waives any and all claims against FarmWorth, LLC for any inaccuracies or inconsistencies in the information and/or data.



TRACT 2
TOTAL SOILS



FarmWorth®



County: **Fayette County, IA**
Location: **32-91N-9W**
Township: **Jefferson**
Acres: **31.36**
Date: **09/26/2025**



Field borders obtained from Farm Service Agency
as of 2008

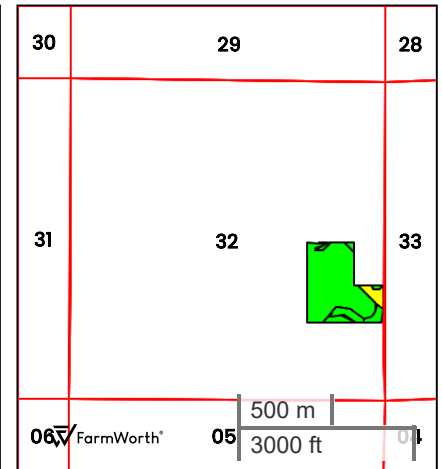
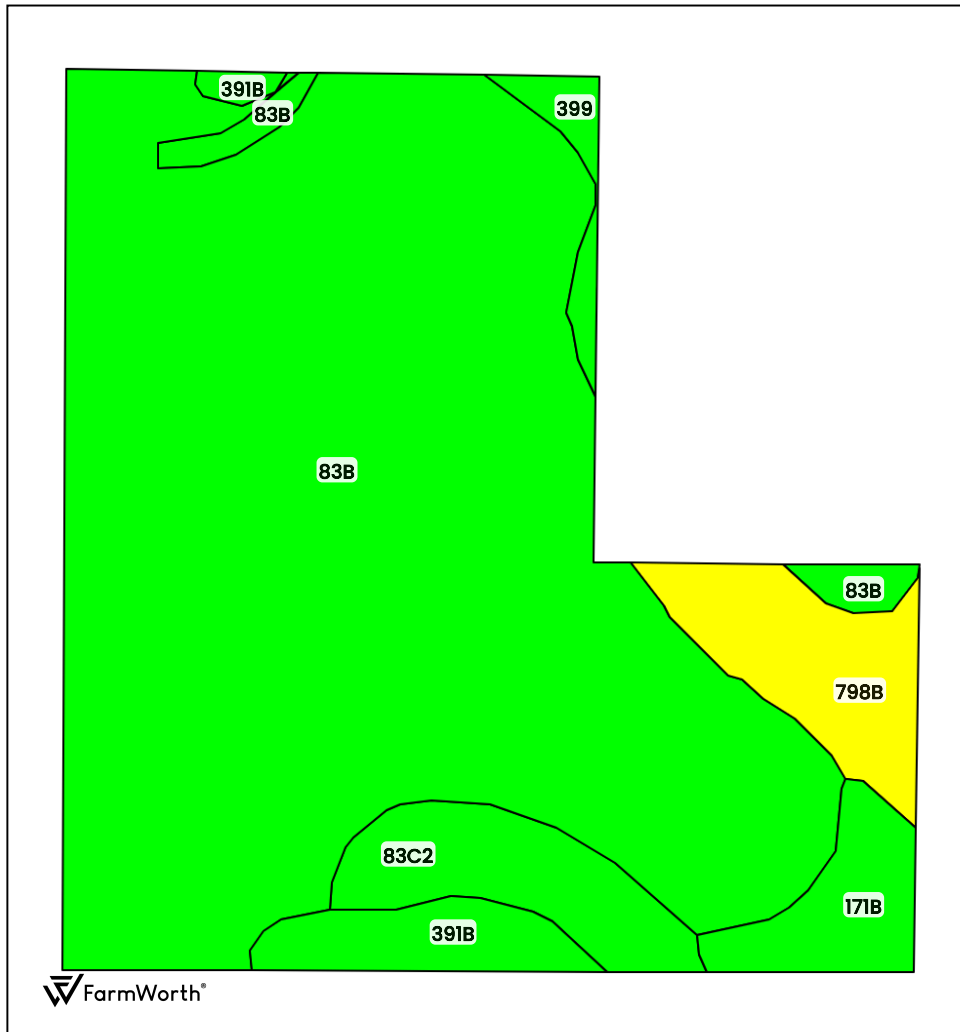
FarmWorth, LLC makes no representations or warranties, express or implied, as to the accuracy of any information, data, numerical values, boundaries, or any other information generated through the use of FarmWorth.com. User is solely responsible for independently investigating and determining all information provided through FarmWorth.com prior to use and waives any and all claims against FarmWorth, LLC for any inaccuracies or inconsistencies in the information and/or data.

Code	Description	Acres	% of field	IA CSR2	Overall NCCPI	Soil Class (Non-Irr)	Drainage Class
83B	Kenyon loam, 2 to 5 percent slopes	24.31	77.52 %	90	89	2	Moderately well drained
798B	Protivin loam, 1 to 4 percent slopes	2.34	7.46 %	61	79	2	Somewhat poorly drained
83C2	Kenyon loam, 5 to 9 percent slopes, eroded	1.67	5.33 %	84	82	3	Moderately well drained
171B	Basset loam, 2 to 5 percent slopes	1.46	4.66 %	85	87	2	Moderately well drained
391B	Clyde-Floyd complex, 1 to 4 percent slopes	1.15	3.67 %	87	89	2	Poorly drained
399	Readlyn silt loam, 1 to 3 percent slopes	0.43	1.37 %	91	80	1	Somewhat poorly drained
Average:				87.2	87.7		

IA has updated the CSR values for each county to CSR2.
Soils data provided by USDA and NRCS.



TRACT 2 TILLABLE SOILS



County: **Fayette County, IA**
Location: **32-91N-9W**
Township: **Jefferson**
Acres: **30.39**
Date: **09/26/2025**



Field borders obtained from Farm Service Agency
as of 2008

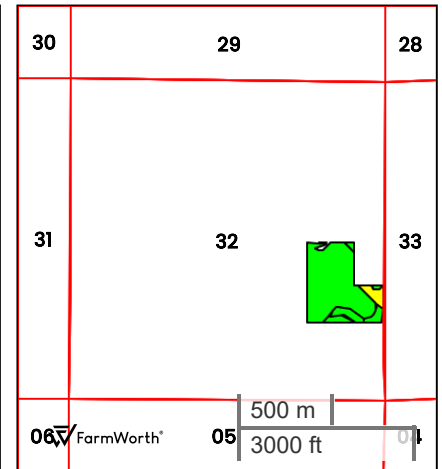
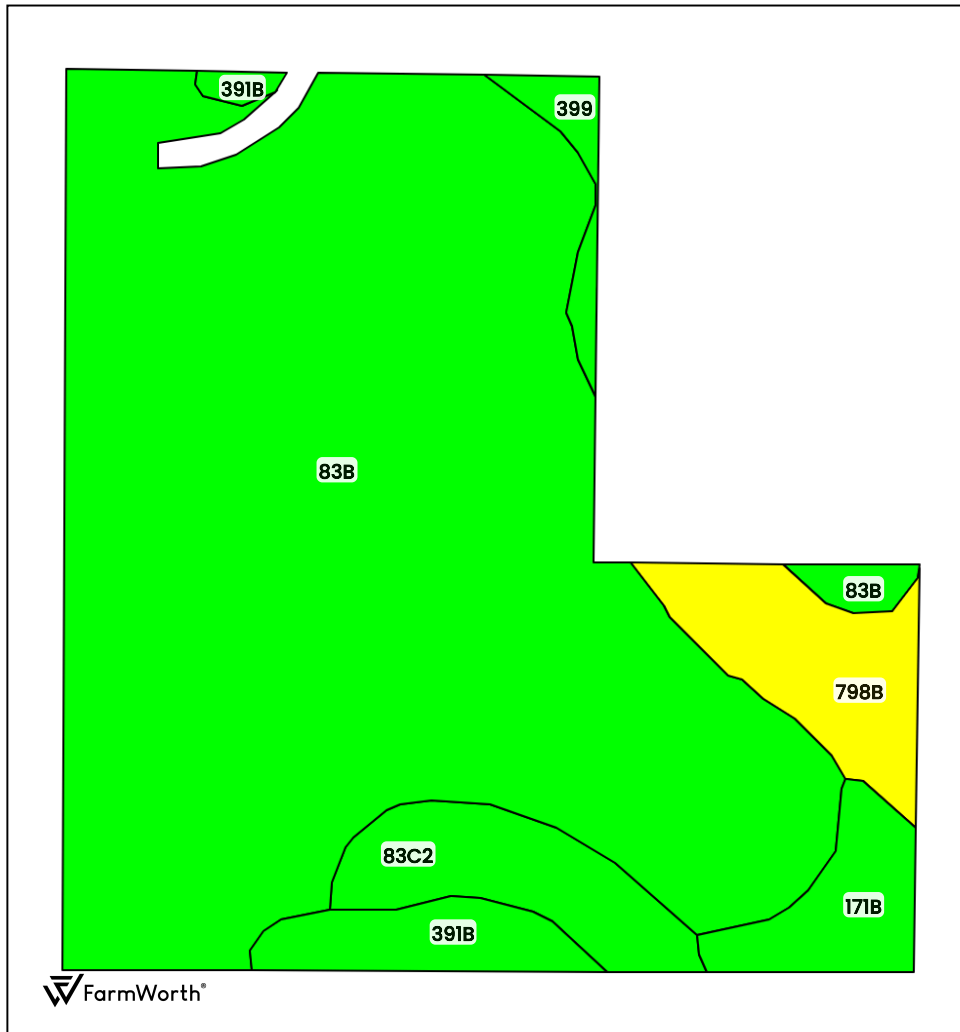
FarmWorth, LLC makes no representations or warranties, express or implied, as to the accuracy of any information, data, numerical values, boundaries, or any other information generated through the use of FarmWorth.com. User is solely responsible for independently investigating and determining all information provided through FarmWorth.com prior to use and waives any and all claims against FarmWorth, LLC for any inaccuracies or inconsistencies in the information and/or data.

Code	Description	Acres	% of field	IA CSR2	Overall NCCPI	Soil Class (Non-Irr)	Drainage Class
83B	Kenyon loam, 2 to 5 percent slopes	24.30	79.96 %	90	89	2	Moderately well drained
798B	Protivin loam, 1 to 4 percent slopes	1.80	5.92 %	61	79	2	Somewhat poorly drained
83C2	Kenyon loam, 5 to 9 percent slopes, eroded	1.65	5.43 %	84	82	3	Moderately well drained
391B	Clyde-Floyd complex, 1 to 4 percent slopes	1.11	3.65 %	87	89	2	Poorly drained
171B	Bassett loam, 2 to 5 percent slopes	1.10	3.62 %	85	87	2	Moderately well drained
399	Readlyn silt loam, 1 to 3 percent slopes	0.43	1.41 %	91	80	1	Somewhat poorly drained
Average:				87.7	87.8		

IA has updated the CSR values for each county to CSR2.
Soils data provided by USDA and NRCS.



TRACT 2 TILLABLE SOILS



County: **Fayette County, IA**
Location: **32-91N-9W**
Township: **Jefferson**
Acres: **30.15**
Date: **09/26/2025**



Field borders obtained from Farm Service Agency
as of 2008

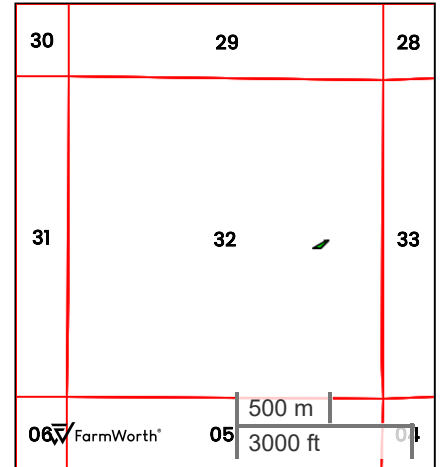
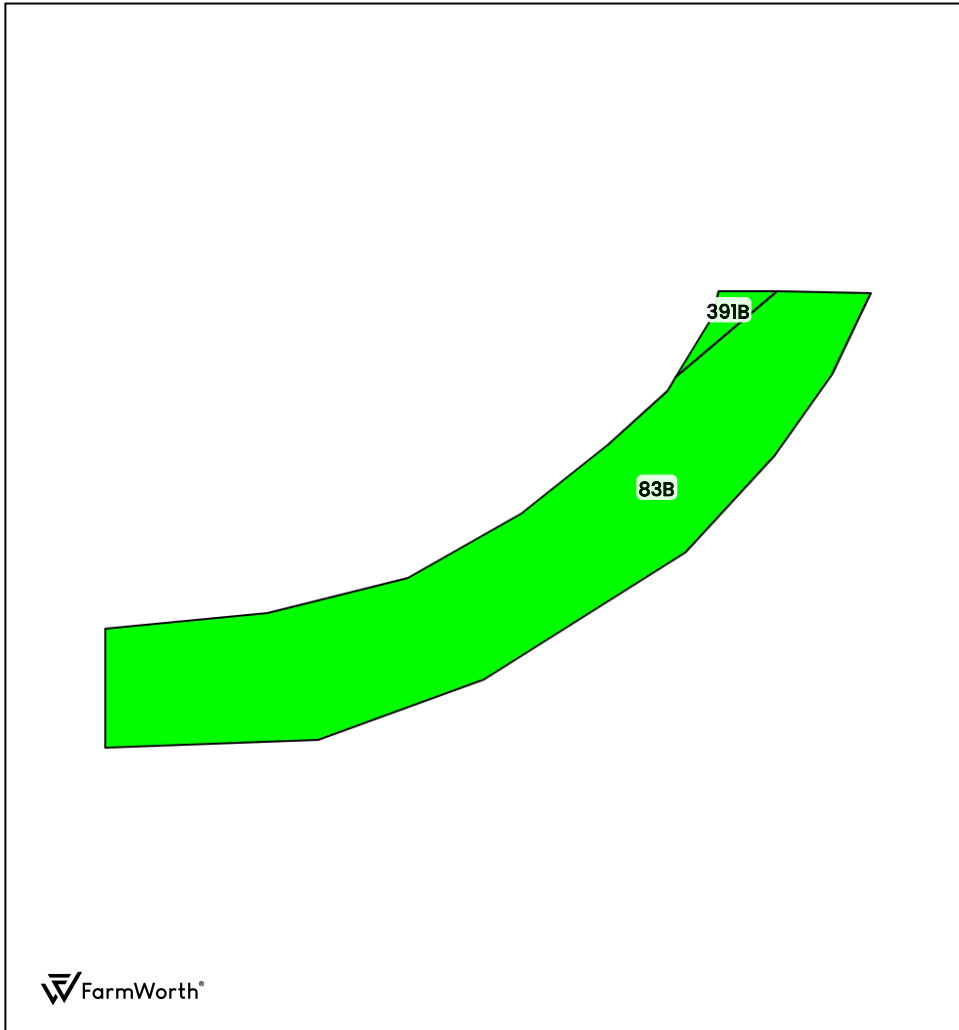
FarmWorth, LLC makes no representations or warranties, express or implied, as to the accuracy of any information, data, numerical values, boundaries, or any other information generated through the use of FarmWorth.com. User is solely responsible for independently investigating and determining all information provided through FarmWorth.com prior to use and waives any and all claims against FarmWorth, LLC for any inaccuracies or inconsistencies in the information and/or data.

Code	Description	Acres	% of field	IA CSR2	Overall NCCPI	Soil Class (Non-Irr)	Drainage Class
83B	Kenyon loam, 2 to 5 percent slopes	24.07	79.83 %	90	89	2	Moderately well drained
798B	Protivin loam, 1 to 4 percent slopes	1.80	5.97 %	61	79	2	Somewhat poorly drained
83C2	Kenyon loam, 5 to 9 percent slopes, eroded	1.65	5.47 %	84	82	3	Moderately well drained
171B	Bassett loam, 2 to 5 percent slopes	1.10	3.65 %	85	87	2	Moderately well drained
391B	Clyde-Floyd complex, 1 to 4 percent slopes	1.10	3.65 %	87	89	2	Poorly drained
399	Readlyn silt loam, 1 to 3 percent slopes	0.43	1.43 %	91	80	1	Somewhat poorly drained
Average:				87.7	87.8		

IA has updated the CSR values for each county to CSR2.
Soils data provided by USDA and NRCS.



TRACT 2
CRP SOILS



County: **Fayette County, IA**
Location: **32-91N-9W**
Township: **Jefferson**
Acres: **0.24**
Date: **09/26/2025**



Field borders obtained from Farm Service Agency
as of 2008

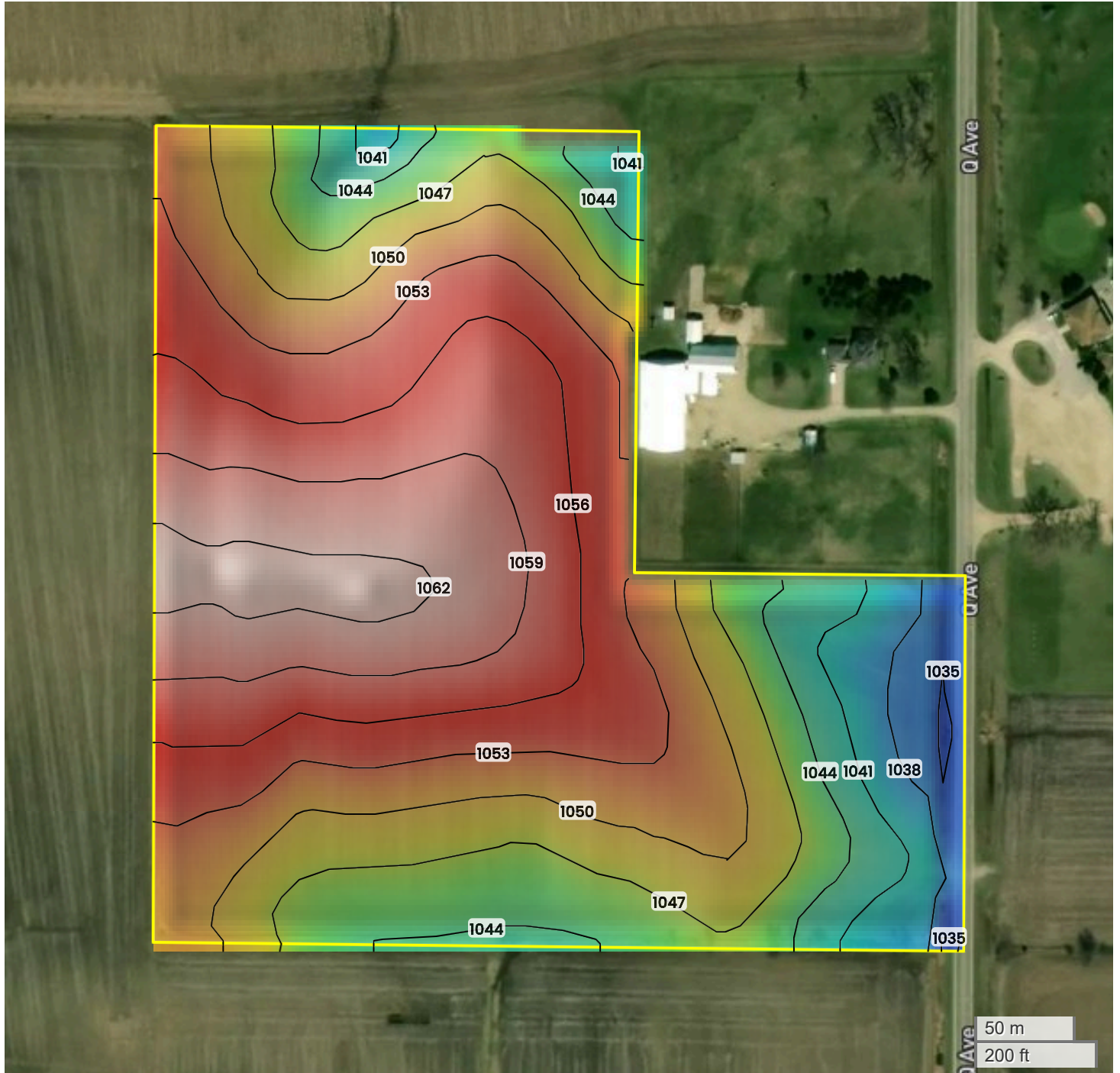
FarmWorth, LLC makes no representations or warranties, express or implied, as to the accuracy of any information, data, numerical values, boundaries, or any other information generated through the use of FarmWorth.com. User is solely responsible for independently investigating and determining all information provided through FarmWorth.com prior to use and waives any and all claims against FarmWorth, LLC for any inaccuracies or inconsistencies in the information and/or data.

Code	Description	Acres	% of field	IA CSR2	Overall NCCPI	Soil Class (Non-Irr)	Drainage Class
83B	Kenyon loam, 2 to 5 percent slopes	0.23	95.83 %	90	89	2	Moderately well drained
391B	Clyde-Floyd complex, 1 to 4 percent slopes	0.01	4.17 %	87	89	2	Poorly drained
Average:				89.9	89.0		

IA has updated the CSR values for each county to CSR2.
Soils data provided by USDA and NRCS.



TRACT 2
TOPOGRAPHY



1035 ft

1062 ft



Center: 42.647301, -91.925982

32-91N-9W

Jefferson Township
Fayette County, IA

Source: USGS 10m DEM

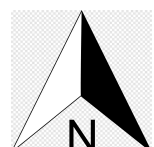
Interval(ft): 3

Max: 1062.0 ft

Min: 1035.0 ft

Range: 27.0 ft

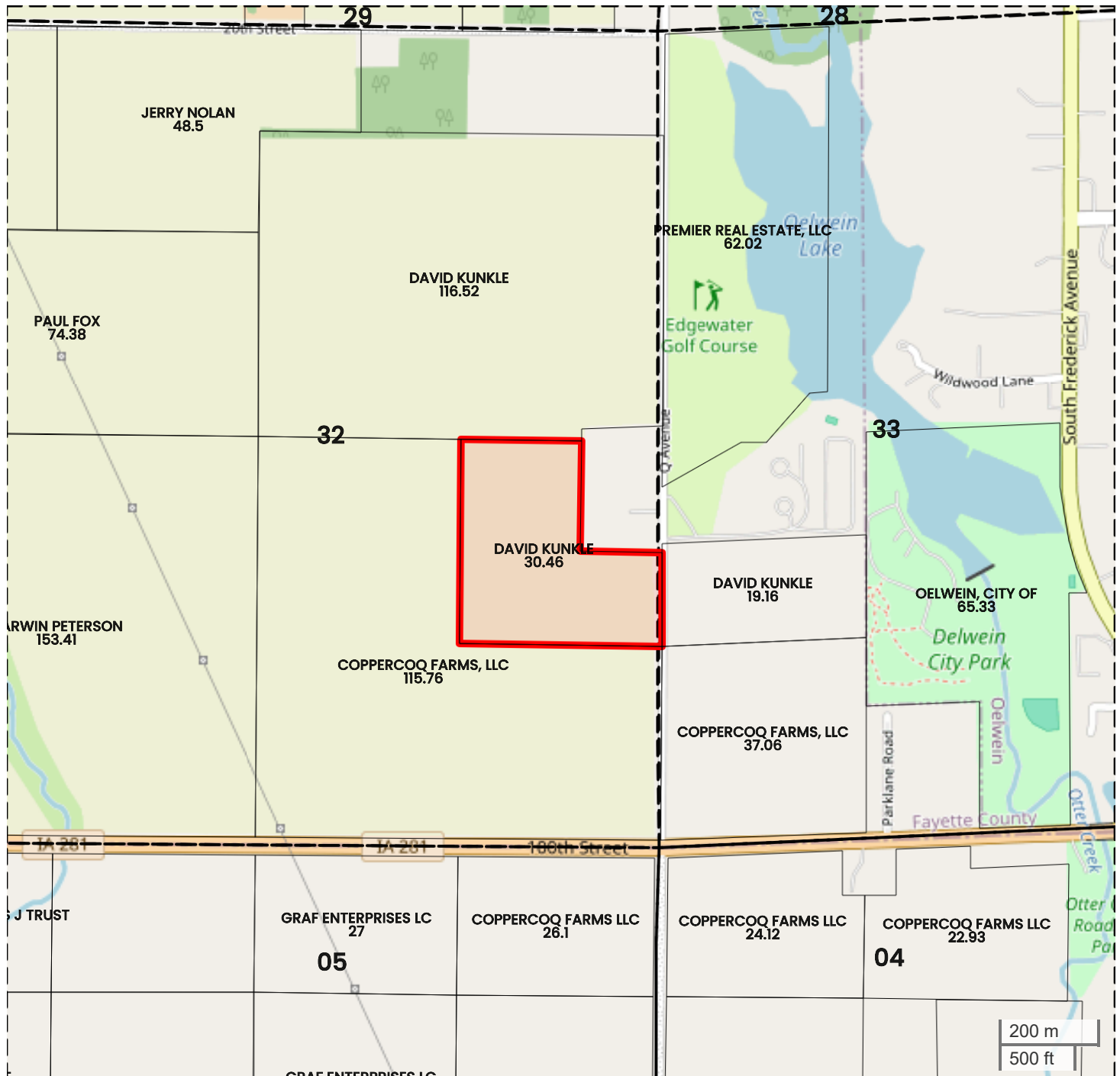
Average: 1048.5 ft



FarmWorth, LLC makes no representations or warranties, express or implied, as to the accuracy of any information, data, numerical values, boundaries, or any other information generated through the use of FarmWorth.com. User is solely responsible for independently investigating and determining all information provided through FarmWorth.com prior to use and waives any and all claims against FarmWorth, LLC for any inaccuracies or inconsistencies in the information and/or data.



TRACT 2
PLAT MAP



Center: 42.647307, -91.925985

32-91N-9W
Jefferson Township
Fayette County, IA

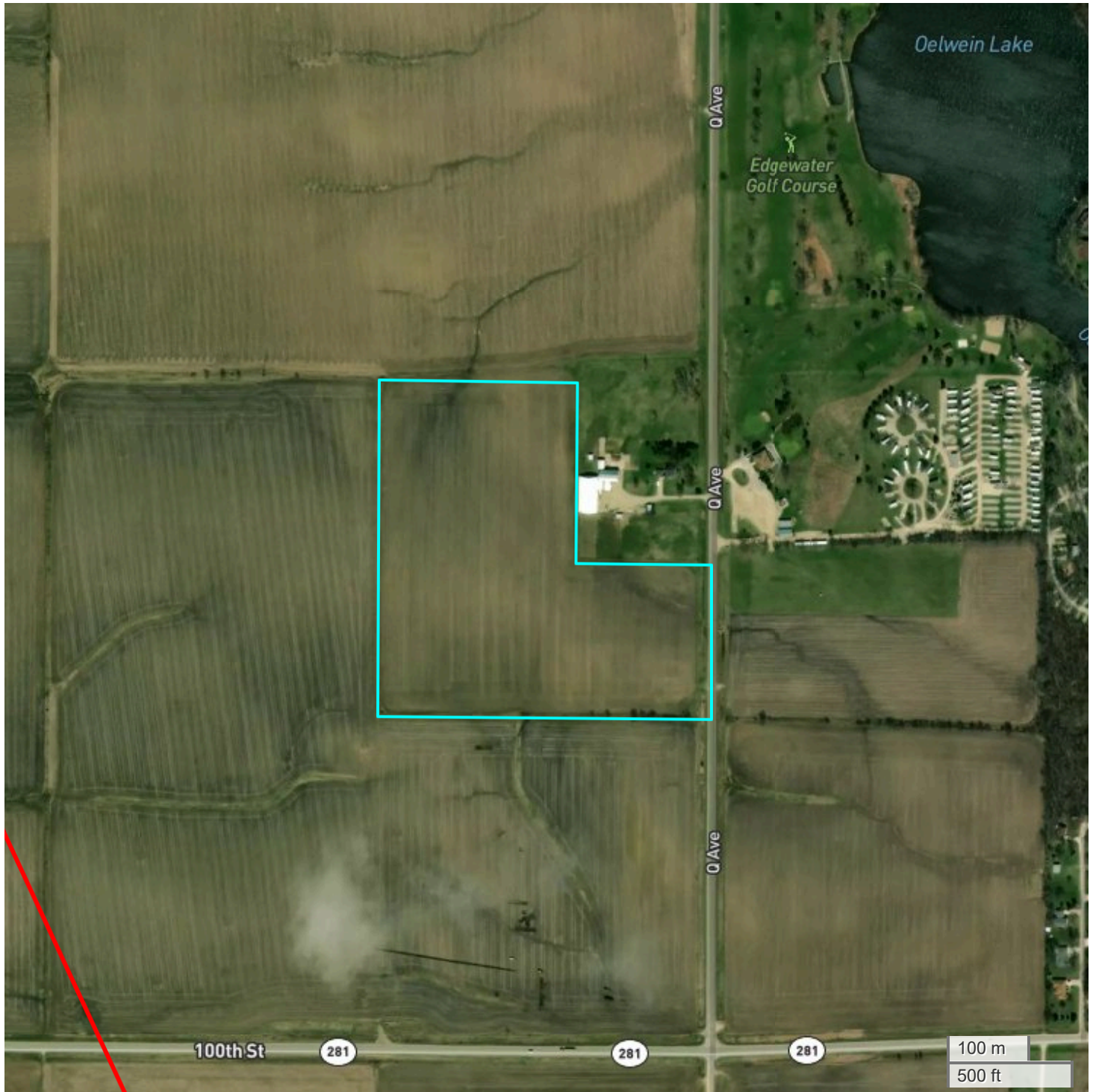


FarmWorth, LLC makes no representations or warranties, express or implied, as to the accuracy of any information, data, numerical values, boundaries, or any other information generated through the use of FarmWorth.com. User is solely responsible for independently investigating and determining all information provided through FarmWorth.com prior to use and waives any and all claims against FarmWorth, LLC for any inaccuracies or inconsistencies in the information and/or data.



TRACT 2

ENERGY MAP



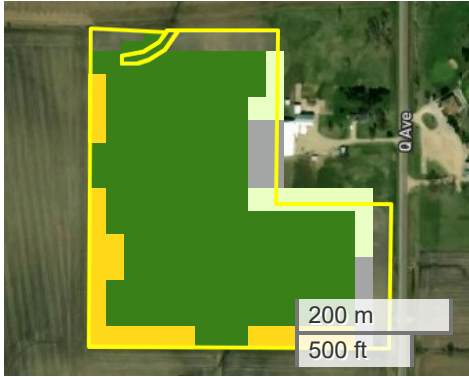
FarmWorth, LLC makes no representations or warranties, express or implied, as to the accuracy of any information, data, numerical values, boundaries, or any other information generated through the use of FarmWorth.com. User is solely responsible for independently investigating and determining all information provided through FarmWorth.com prior to use and waives any and all claims against FarmWorth, LLC for any inaccuracies or inconsistencies in the information and/or data.

- Transmission Lines
- Substations
- Wind Turbine
- Wind Farm
- Solar
- Oil and Gas (Active)
- Oil and Gas (Abandoned)

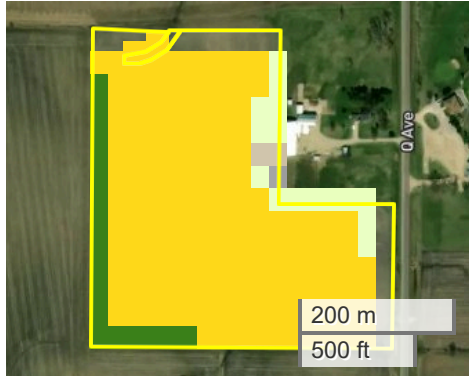


TRACT 2 CROP HISTORY

2024



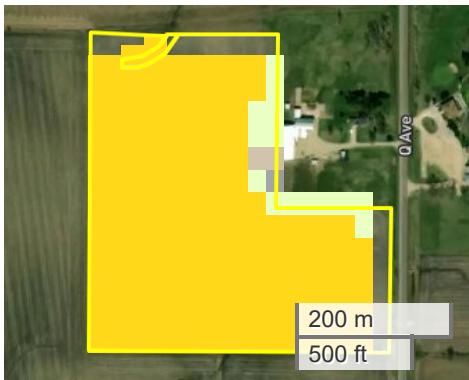
2023



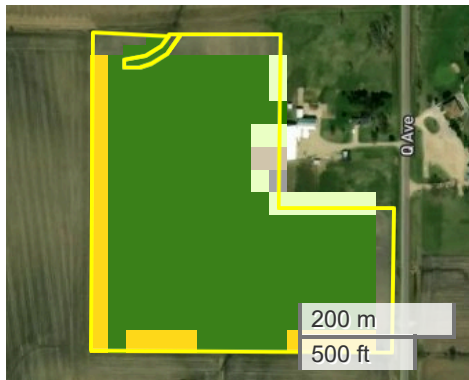
2022



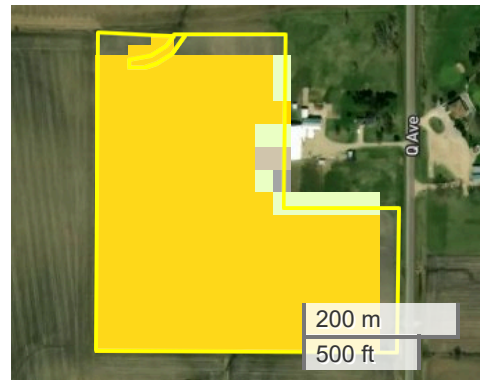
2021



2020



2019

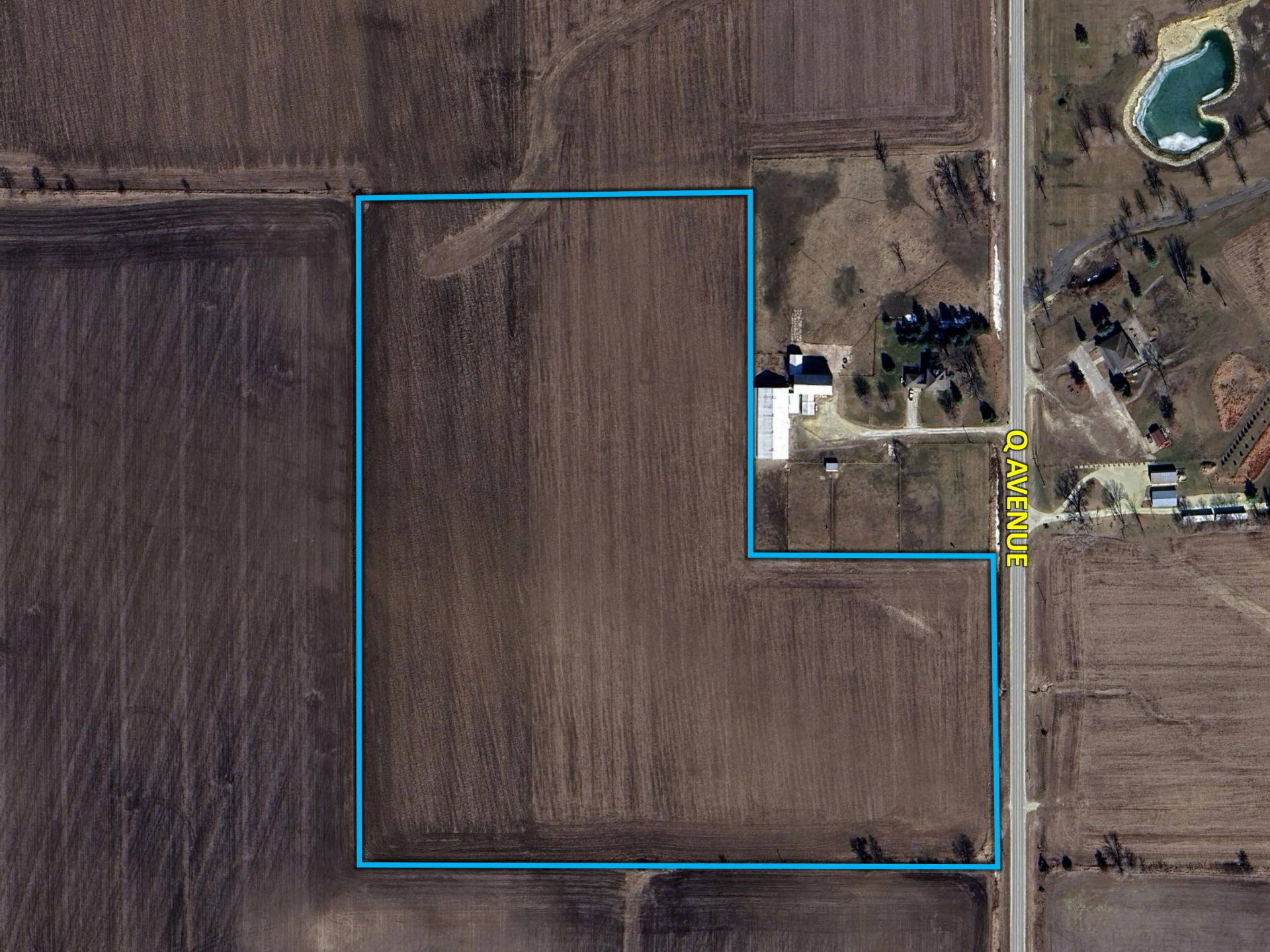


Crop History

		Percent Area (>0.5 %)						
	Crop	2024	2023	2022	2021	2020	2019	Average
■	Soybeans	75.0	9.2	80.4	0.0	80.4	0.0	61.3
■	Corn	12.5	81.0	9.2	90.8	12.0	92.4	49.6
■	Grass/Pasture	7.1	8.2	8.7	7.6	6.0	6.0	7.2
■	Developed/Open Space	2.2	0.0	0.0	0.0	0.0	0.0	2.2
■	Developed/High Intensity	1.1	0.0	0.0	0.0	0.0	0.0	1.1
■	Barren	0.0	1.1	1.1	1.1	1.1	1.1	1.1



FarmWorth, LLC makes no representations or warranties, express or implied, as to the accuracy of any information, data, numerical values, boundaries, or any other information generated through the use of FarmWorth.com. User is solely responsible for independently investigating and determining all information provided through FarmWorth.com prior to use and waives any and all claims against FarmWorth, LLC for any inaccuracies or inconsistencies in the information and/or data.



Q AVENUE

TRACT #1

TRACT #2

TRACT #3

O AVENUE

OELWEIN LAKE





OELWEIN, IOWA

IOWA HIGHWAY 3

20TH STREET

#1

#2

#3

IOWA HIGHWAY 281

IOWA HIGHWAY 150

FAYETTE COUNTY, IOWA

BUCHANAN COUNTY, IOWA

HAZLETON, IOWA